

BLOOMFIELD ON THE LAKE PARK NO. 4

PART OF THE N.E. 1/4 OF SECTION 23,
T.2N., R.9E., WEST BLOOMFIELD TWP.,
OAKLAND CO., MICH.

PLAT LEGEND

ALL DIMENSIONS ARE IN FEET. ALL DIMENSIONS ON THE CURVE ARE MEASURED ALONG THE ARC.

(R) DENOTES RADIAL LOT LINE.

ALL LOT MARKERS ARE 1/2" IRON PIPES AND ARE 18" LONG. THE SYMBOL (o) INDICATES A CONCRETE MONUMENT.

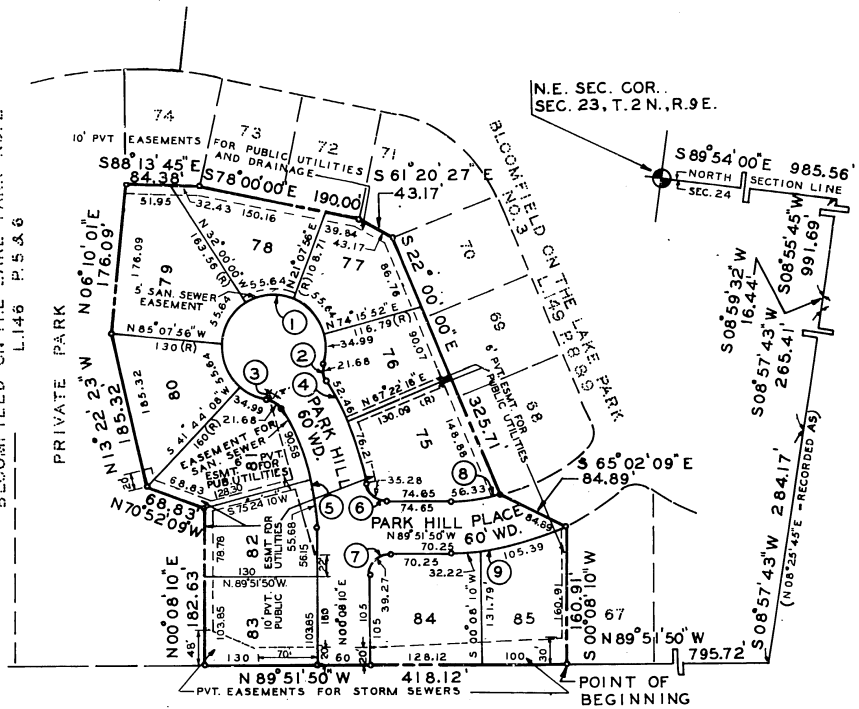
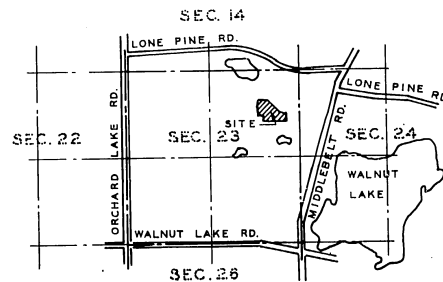
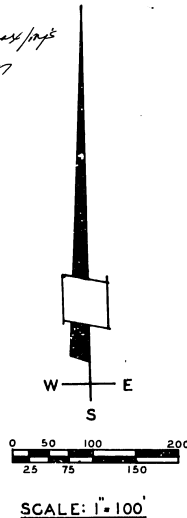
ALL BEARINGS ARE IN RELATION TO "BLOOMFIELD ON THE LAKE PARK", L. 141, P. 20 AND 21 OAKLAND COUNTY RECORDS.

Verified from copy of Record plat

Richard L. Bonney
 RICHARD L. BONNEY
 LAND SURVEYOR
 No. 9209
 Date August 30, 1977

CURVE DATA

CURVE	RADIUS	ARC	CENTRAL ANGLE	CHORD BEARING	CHORD LENGTH
1	60.00	292.54	279° 21' 34"	S 58° 00' 00" W	77.65
2	25.00	21.68	49° 40' 47"	N 07° 09' 36" W	21.00
3	25.00	21.68	49° 40' 47"	S 56° 50' 23" E	21.00
4	320.77	128.67	22° 59' 00"	N 20° 30' 30" W	127.81
5	260.77	148.26	32° 08' 10"	S 15° 55' 55" E	144.35
6	25.00	35.28	80° 50' 50"	N 49° 26' 25" W	32.42
7	25.00	39.27	90° 00' 00"	N 45° 06' 10" E	35.36
8	240.95	56.33	13° 23' 44"	S 83° 26' 18" W	56.21
9	300.95	137.61	26° 11' 55"	N 77° 02' 13" E	137.61



VICINITY MAP
NO SCALE

SHEET 1 OF 2

