

BLOOMFIELD ON THE LAKE PARK NO. 3

PART OF THE N.E. 1/4 OF SECTION 23
AND THE N.W. 1/4 OF SECTION 24, T.2N., R.9 E.,
WEST BLOOMFIELD TWP., OAKLAND CO., MICH.

Certified true copy of Recorded
(2)

Richard E. Lomas
REGISTERED PROFESSIONAL SURVEYOR
By *Richard E. Lomas/MyS*
Richard E. Lomas - Plat Examiner
Date November 3, 1974

R=481.18'
A= 65.41'
Δ=07°47'17"
CH=65.36'
CH. BR. S87°58'49"E

PLAT LEGEND:

ALL DIMENSIONS ARE IN FEET. ALL DIMENSIONS ON THE CURVE ARE MEASURED ALONG THE ARC.

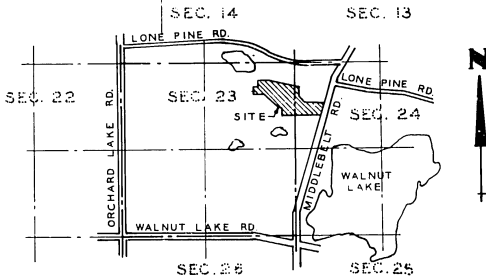
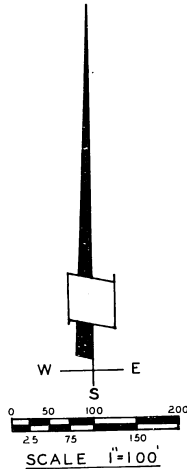
(R) DENOTES RADIAL LOT LINE.

ALL LOT MARKERS ARE 1/2" IRON PIPES AND ARE 18" LONG. THE SYMBOL (o) INDICATES A CONCRETE MONUMENT.

ALL BEARINGS ARE IN RELATION TO "BLOOMFIELD ON THE LAKE PARK", L. 141, P. 20 AND 21 OAKLAND COUNTY RECORDS.

CURVE DATA:

CURVE	RADIUS	ARC	CENTRAL ANGLE	CHORD BEARING	CHORD LENGTH
1	541.18	57.49	06°05'11"	N81°02'35"W	57.46
2	481.18	51.12	06°05'11"	S81°02'36"E	51.09
3	218.07	21.314	56°00'00"	N50°00'00"W	204.76
4	158.07	15.450	56°00'00"	S50°00'00"E	148.42
5	238.04	28.79	06°55'50"	S25°27'55"E	28.78
6	25.00	34.00	77°55'50"	S10°02'05"W	31.44
7	240.95	116.66	27°44'26"	S62°52'13"W	115.52
8	300.95	78.46	14°56'15"	N56°28'08"E	78.24
9	25.00	34.00	77°55'50"	N87°57'55"E	31.44
10	178.04	192.65	62°00'00"	N53°00'00"W	183.39
11	238.04	128.50	30°55'50"	S68°32'05"E	126.95
12	25.00	37.98	87°02'37"	N52°29'38"E	34.43
13	25.00	40.56	92°57'23"	S37°30'56"E	36.26



VICINITY MAP
NO SCALE

