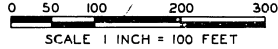
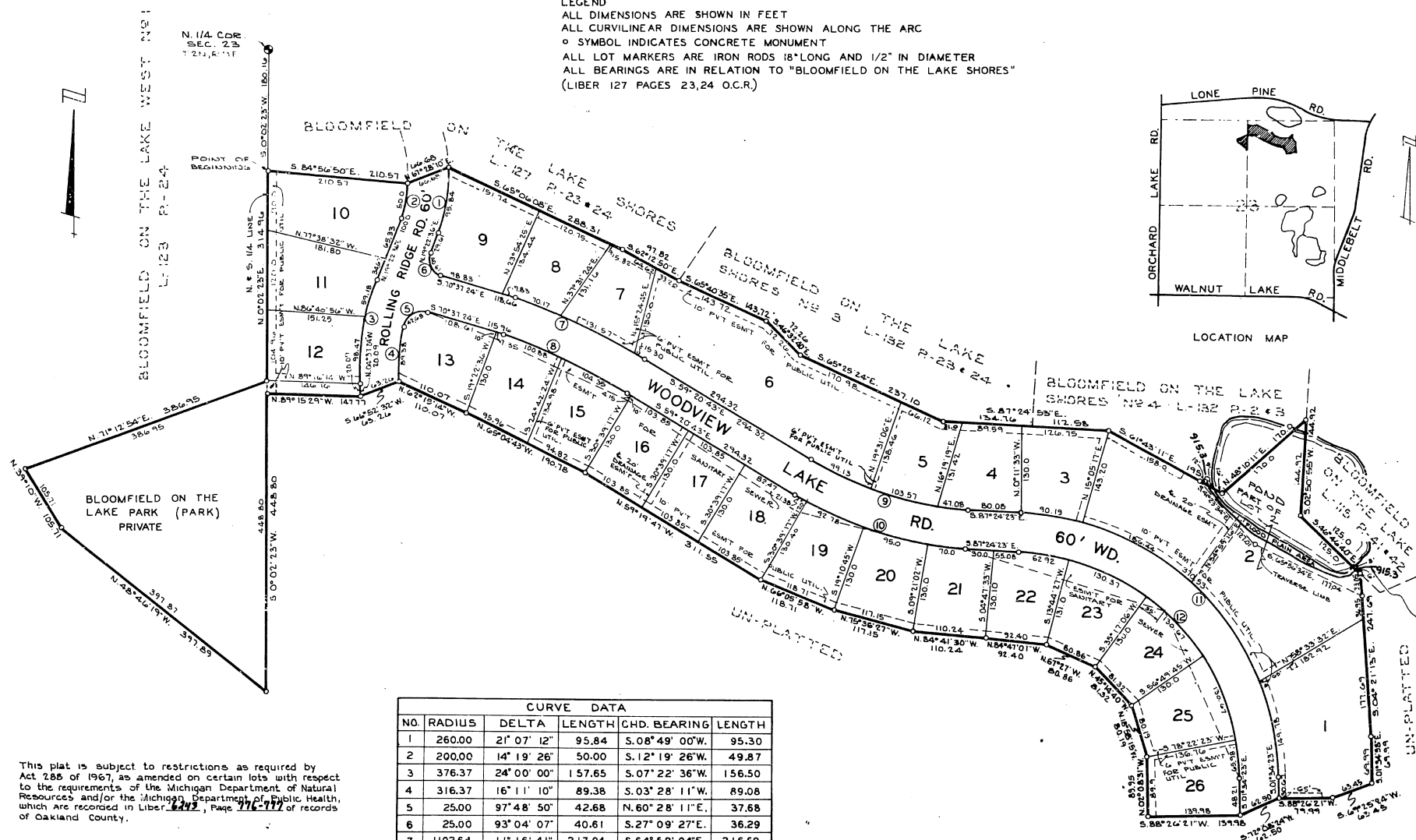
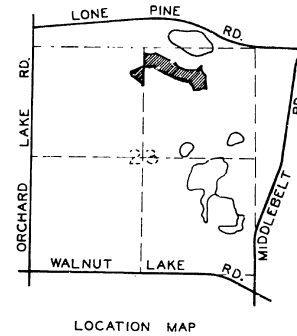


# BLOOMFIELD ON THE LAKE PARK

PART OF THE N. 1/2 OF SEC. 23, T. 2 N., R. 9 E.,  
WEST BLOOMFIELD TWP, OAKLAND CO., MICHIGAN



**LEGEND**  
 ALL DIMENSIONS ARE SHOWN IN FEET  
 ALL CURVILINEAR DIMENSIONS ARE SHOWN ALONG THE ARC  
 ○ SYMBOL INDICATES CONCRETE MONUMENT  
 ALL LOT MARKERS ARE IRON RODS 18" LONG AND 1/2" IN DIAMETER  
 ALL BEARINGS ARE IN RELATION TO "BLOOMFIELD ON THE LAKE SHORES"  
 (LIBER 127 PAGES 23,24 O.C.R.)



CURVE DATA					
NO.	RADIUS	DELTA	LENGTH	CHD. BEARING	LENGTH
1	260.00	21° 07' 12"	95.84	S. 08° 49' 00" W.	95.30
2	200.00	14° 19' 26"	50.00	S. 12° 19' 26" W.	49.87
3	376.37	24° 00' 00"	157.65	S. 07° 22' 36" W.	156.50
4	316.37	16° 11' 10"	89.38	S. 03° 28' 11" W.	89.08
5	25.00	97° 48' 50"	42.68	N. 60° 28' 11" E.	37.68
6	25.00	93° 04' 07"	40.61	S. 27° 09' 27" E.	36.29
7	1102.64	11° 16' 41"	217.04	S. 64° 59' 04" E.	216.69
8	1042.64	11° 16' 41"	205.23	S. 64° 59' 04" E.	204.90
9	510.00	28° 03' 40"	249.78	S. 73° 22' 33" E.	247.29
10	570.00	28° 03' 40"	279.16	S. 73° 22' 33" E.	276.38
11	407.52	85° 50' 00"	610.50	S. 44° 29' 23" E.	554.99
12	347.52	85° 50' 00"	520.61	S. 44° 29' 23" E.	473.28

This plat is subject to restrictions as required by Act 288 of 1967, as amended on certain lots with respect to the requirements of the Michigan Department of Natural Resources and/or the Michigan Department of Public Health, which are recorded in Liber 2493, Page 776-777 of records of Oakland County.

FELSHAUSER ASSOCIATES INC.  
 5775 DIXIE HWY.  
 WATERFORD, MICHIGAN 48095

54138