

BLOOMFIELD ON THE LAKE PARK NO. 6

PART OF THE N.E. 1/4 OF SEC. 23, T.2N., R.9E., WEST BLOOMFIELD TWP., OAKLAND COUNTY, MICH.

SURVEYOR'S CERTIFICATE

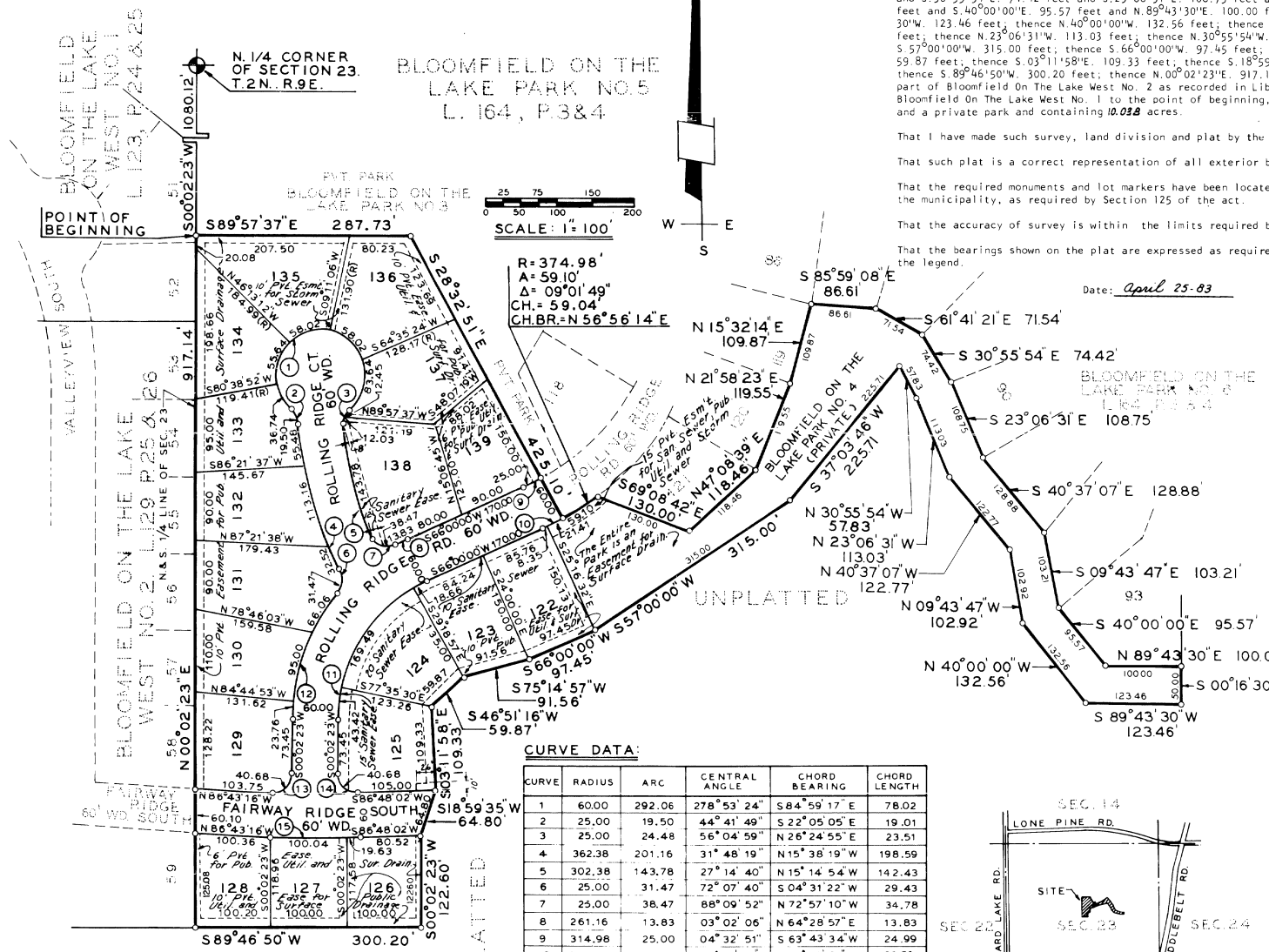
I, John J. Emig, Surveyor, Certify:

That I have surveyed, divided and mapped the land shown on this plat, described as follows: Bloomfield On The Lake Park No. 6, part of the N.E. 1/4 of Sec. 23, T. 2 N., R. 9 E., West Bloomfield Twp., Oakland County, Mich., beginning at a point, said point being distant 5.00°02'23"W, 1080.12 feet along the N. 6 S. 1/4 line of said Section 23, said line also being part of Bloomfield On The Lake West No. 1 as recorded in Liber 123, Pages 24 and 25 and said line also being part of Bloomfield On The Lake Park as recorded in Liber 141, Pages 20 and 21, Oakland County Records and said line also being in part of Bloomfield On The Lake Park No. 5 as recorded in Liber 164, Pages 3 and 4, Oakland County Records from the N. 1/4 Corner of said Section 23; thence from said point of beginning the following fifteen courses along said Bloomfield On The Lake Park No. 5; S. 89°57'37"E, 287.73 feet and S. 28°32'51"E, 425.10 feet and S. 10°10'00"E, 119.55 feet and N. 15°32'14"E, 109.87 feet and S. 85°59'08"E, 86.61 feet and S. 61°41'21"E, 71.54 feet and S. 30°55'54"E, 74.42 feet and S. 23°06'31"E, 108.75 feet and S. 40°37'07"E, 128.88 feet and S. 09°43'47"E, 103.21 feet and S. 40°00'00"E, 95.57 feet and N. 89°43'30"E, 100.00 feet; thence S. 00°16'30"E, 50.00 feet; thence S. 89°43'30"W, 123.46 feet; thence N. 40°00'00"W, 132.56 feet; thence N. 09°43'47"W, 102.92 feet; thence N. 40°37'07"W, 122.77 feet; thence N. 23°06'31"W, 113.03 feet; thence N. 30°55'54"W, 57.83 feet; thence S. 37°03'46"W, 225.71 feet; thence S. 57°00'00"W, 315.00 feet; thence S. 66°00'00"W, 97.45 feet; thence S. 75°14'57"W, 91.56 feet; thence S. 46°51'16"W, 59.87 feet; thence S. 03°11'58"E, 109.33 feet; thence S. 18°59'35"W, 64.80 feet; thence S. 00°02'23"W, 122.60 feet; thence S. 89°46'50"W, 300.20 feet; thence N. 00°02'23"E, 917.14 feet along said N. & S. 1/4 line, said line also being part of Bloomfield On The Lake West No. 2 as recorded in Liber 129, Pages 25 & 26, Oakland County Records and said Bloomfield On The Lake West No. 1 to the point of beginning, consisting of 18 lots numbered 122-139 both inclusive and a private park and containing 10.098 acres.

That I have made such survey, land division and plat by the direction of the owners of such land.
 That such plat is a correct representation of all exterior boundaries of the land surveyed and the subdivision of it.
 That the required monuments and lot markers have been located in the ground or that survey has been deposited with the municipality, as required by Section 125 of the act.
 That the accuracy of survey is within the limits required by Section 126 of the act.
 That the bearings shown on the plat are expressed as required by Section 126 (3) of the act and as explained in the legend.

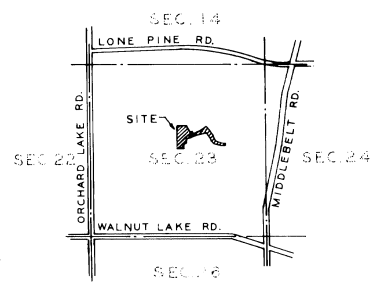
Date: April 25-83

Zeimet-Wozniak & Associates, Inc.
 John J. Emig
 John J. Emig R.L.S. #10059
 29200 Southfield Road, Suite 205
 Southfield, Michigan 48076



CURVE DATA:

CURVE	RADIUS	ARC	CENTRAL ANGLE	CHORD BEARING	CHORD LENGTH
1	60.00	292.06	278°53'24"	S84°59'17"E	78.02
2	25.00	19.50	44°41'49"	S22°05'05"E	19.01
3	25.00	24.48	56°04'59"	N26°24'55"E	23.51
4	362.38	201.16	31°48'19"	N15°38'19"W	198.59
5	302.38	143.78	27°14'40"	N15°14'54"W	142.43
6	25.00	31.47	72°07'40"	S04°31'22"W	29.43
7	25.00	38.47	88°09'52"	N72°57'10"W	34.78
8	261.16	13.83	03°02'06"	N64°28'57"E	13.83
9	314.98	25.00	04°32'51"	S63°43'34"W	24.99
10	374.98	29.76	04°32'51"	S63°43'34"W	29.75
11	201.16	231.57	65°57'37"	N33°01'11"E	219.00
12	261.16	184.82	40°32'49"	N20°18'47"E	180.98
13	25.00	40.68	93°14'21"	S46°39'33"W	36.34
14	25.00	40.68	93°14'21"	N46°34'47"W	36.34
15	1058.38	119.67	06°28'42"	S89°57'37"E	119.61



PLAT LEGEND:
 ALL DIMENSIONS ARE IN FEET. ALL DIMENSIONS ON THE CURVE ARE MEASURED ALONG THE ARC.
 (R) DENOTES RADIAL LOT LINE.
 ALL LOT MARKERS ARE 1/2" IRON PIPES AND ARE 18" LONG. THE SYMBOL (o) INDICATES A CONCRETE MONUMENT.
 ALL BEARINGS ARE IN RELATION TO "BLOOMFIELD ON THE LAKE-PARK", L. 141, OF PLATS P. 20 & 21, OAKLAND COUNTY RECORDS.

58554